

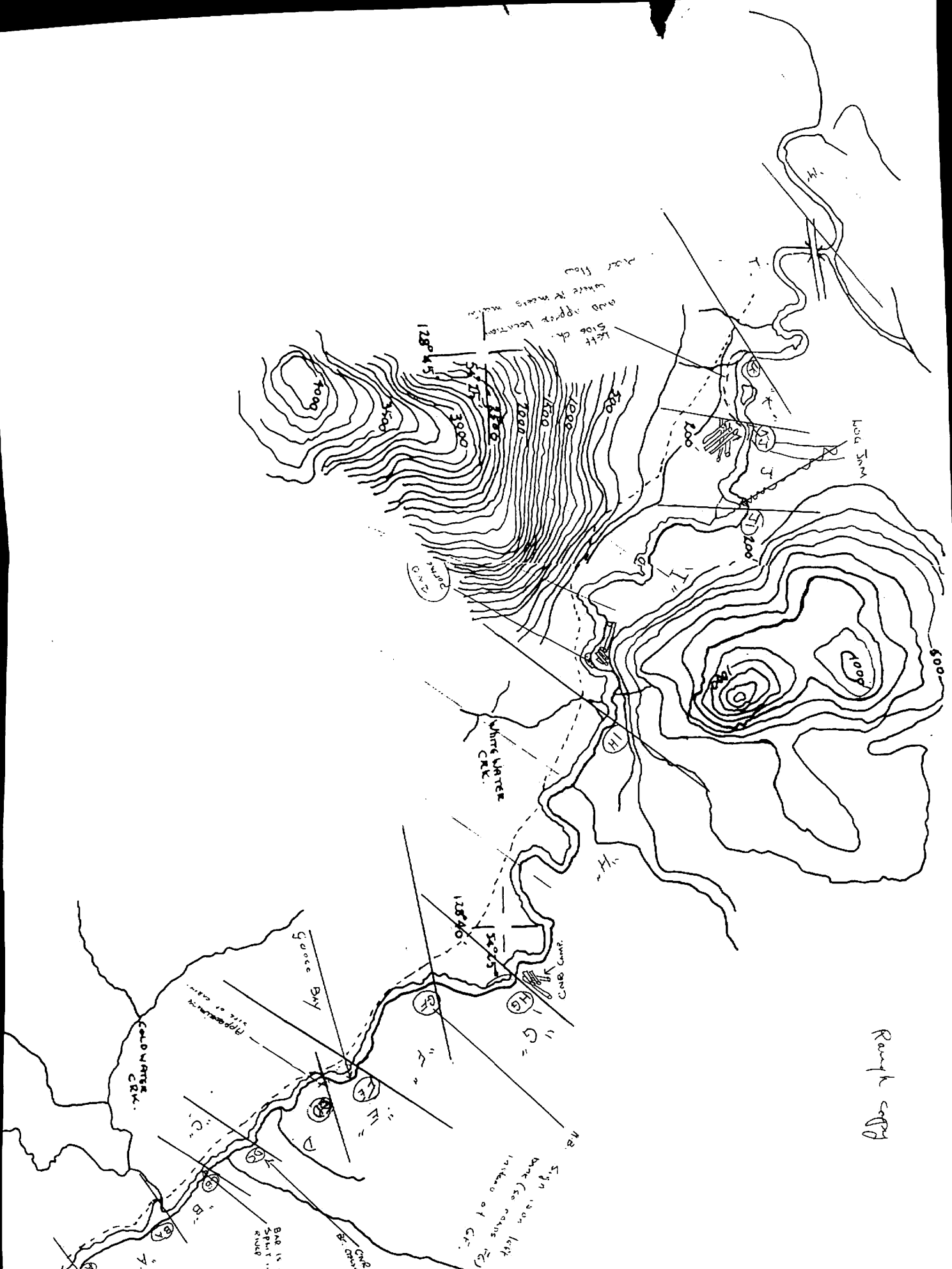
LARKSF RIVER

Section	kg. (yds)	ft. width (yds)	Area yds ²	Soil Types - Area
A	1000	83.3	83,300	mud sand fine med.
B	700	35.7	24,990	large rocky bldas bedrock
C	1200	25.3	30,360	
D	800	33.8	27,040	
E	300	31.1	9,330	
F	1100	36.1	39,710	
G	700	31.4	21,980	
H	4500	31.2	140,400	
I	2900	36.1	104,690	
J	800	37.9	30,320	
L	1700	35.1	59,470	
		571,590		
		15700		

Strip 3' wide

Section beginning at head of Log jamto point where detour meets main channel, downstream.
 Columbia Cellulose Br ← LK 175-161 17

Markers	Section	Strip No.	Total No. Markers
BA ← A	A	1-10	10
CB ← BA	B	11-17	7
DC ← CB	C	18-29	12
ED ← DC	D	30-37	8
FE ← ED	E	38-40	3
GF ← FE	F	41-51	11
HG ← GF	G	52-58	7
IH ← HG	H	59-106	48
JI ← IH	I	107-136	30
KJ ← JI	J	137-174	8
LK ← KJ	K		



Rough copy