

The **GUMBOOT GAZETTE**



Volume 13, number 2

SUMMER 2023

Find us at the Skeena
Valley Farmers Market!

Interpretive
Walks and Events!

Photo Contest

Plant
Survey
Lecture

Mid-Scully Fry-
Out Monitoring



Fauna Feature:
American Beaver



Volunteer Opportunities

Coming Soon...
New Trail!

LWSS Clothing and
Greeting Cards

SKEENA VALLEY FARMERS MARKET

Open Saturdays from 9:00AM to
1:00PM
George Little Park

We are excited to be hosting another booth at the
Skeena Valley Farmers Market this summer!

Sign up as a member or volunteer

Learn about our ongoing projects and programs

Support your local watershed initiatives through our clothing and
greeting cards fundraiser

We will be at the Market June 17th, July 22nd, and August 19th

Come by and say hi!



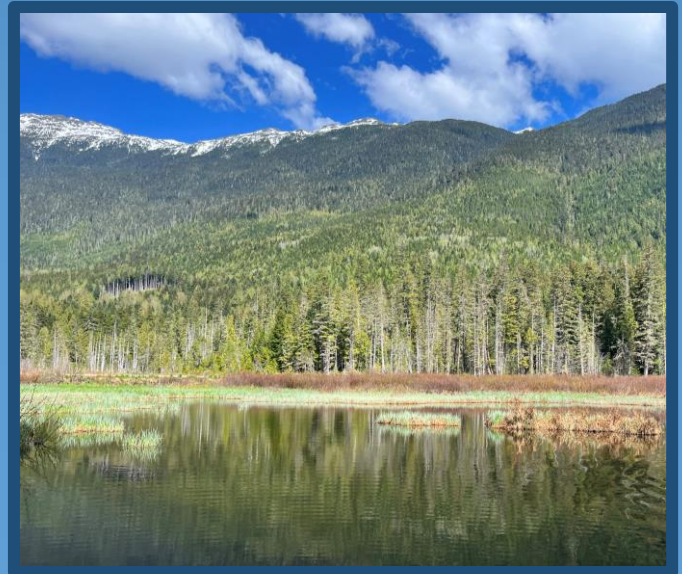


Jackpine Wetland Interpretive Trail

We are pleased to announce a new interpretive trail project is in the works for the Lakelse watershed!

Located at a natural wetland near Jackpine Flats, this trail project aims to:

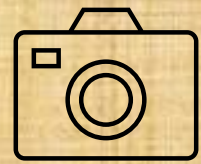
1. Provide opportunities for the local community (you!) to easily engage with nature
2. Protect the wetland ecosystem and the species who call it home
3. Provide educational opportunities through interpretive signage and future events



LWSS would like to thank all our project partners including:



LWSS Photo Contest



Spending time at the lake this summer? Hiking around in the Lakelse watershed? Snap a photo!

LWSS is running a summer photo contest! Enter your photos for a chance to win LWSS prizes and be featured on our social media and in our fall newsletter.



Rules:

- Photo submissions will be accepted until August 20th, 2023
- Maximum of 3 photos per person
- Categories include:
 - Fish and Wildlife
 - Landscapes
 - Recreation
- Photos must be taken in the Lakelse watershed
- Photos must be taken between May 1st and August 20th, 2023

Email your photos to watershedcoordinator.Lakelse@gmail.com

- Include the photographer's first and last name, photo location, date taken, and photo category

Public Lecture

Plant Survey of Lakelse Lake Wetlands Provincial Park



As the final component of our BC Parks Plant Survey project from 2022-23, LWSS is happy to announce the "Lakelse Lake Wetlands and the Goldilocks Zone" public lecture happening on Wednesday, June 14th

This lecture will highlight the findings of the plant surveys conducted at Lakelse Lake including rare lichens and regionally significant ecosystems.

Who: Paula Bartemucci
When: Wednesday June 14, 2023
12:00-1:00 pm
Where: Room 103/104,
UNBC Terrace Campus
(4837 Keith Avenue)

We hope to see you there!

Thank you again to BC Parks for their support of this project through the Park Enhancement Fund

UNBC UNIVERSITY OF
NORTHERN BRITISH COLUMBIA

Northwest Region

UNBC Public Presentation*

Wednesday, June 14, 12:00-1:00 p.m.

Room 103/104, UNBC Terrace Campus**

*sponsored by the Lakelse Watershed Stewards Society, BC Parks,
and Nature Trust BC

"Lakelse Lake Wetlands and the Goldilocks Zone"

by Paula Bartemucci, Gentian Botanical Research



BC Parks



Intro to Geocaching Event GRUCHY'S BEACH TRAIL

**Come learn about
Geocaching with LWSS!**

We will have a geocaching information booth setup at the Gruchy's parking lot on **Saturday, June 17th** from **11:00am to 2:00pm**

Stop by to learn some tips and tricks for finding the newly installed geocaches on the Gruchy's Beach Trail

Everyone who successfully locates a new geocache will be entered into a draw to win some fun LWSS prizes!

**For more information
contact us at:**
watershedcoordinator.lakelse@gmail.com

**Saturday, June 17th
11am to 2pm**



Thank you to Outdoor Recreation Council of BC for their support of this event in celebration of BC Trails Day!

Furlong Bay Interpretive Walks



LWSS is excited for another season of interpretive walks! The walks are located at Furlong Bay Campground in Lakelse Lake Provincial Park and involve a guided walk along the Twin Spruce Trail with LWSS technicians. Come join us on the trail and learn about the plants, fish, bats, birds and invertebrates that inhabit the Lakelse Watershed.



We will be meeting at
10:00 am every second
Friday at the
amphitheatre at Furlong
Bay Campground.

Interpretive Walk Dates:

June 23rd

July 7th

July 21st

August 4th

August 18th

SUMMER EVENTS

For more event information and updated schedule, visit our website [events page](#)



Lake Safety with Terrace Search and Rescue

Saturday, June 24th

12:00pm-3:00pm



BC Parks

BC Parks Day Celebration "Fish Printing"

Saturday, July 15th

Time to be determined

Lakelse Birds and Build Your Own Bird Feeder

Date and time to be determined



Fish Habitat with SkeenaWild

Tuesday, August 15th

10:00am – 12:00pm

Bear Aware and Wildlife Rescue with NLWS

Date and time to be determined



Scully Creek Fry Out Program

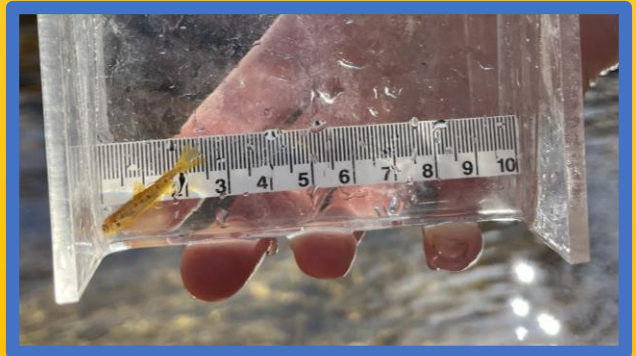
From early April to early June, LWSS technicians and volunteers conducted sockeye fry out migration monitoring on the Mid-Channel of Scully Creek, which flows into Lakelse Lake.

This program evaluates the success of the spawning gravels that were placed by DFO in 2008 to increase sockeye populations from the Lakelse Watershed.

2956 sockeye were counted over the two-month period this spring, along with other species including coho salmon, pink salmon, and cutthroat trout.

2956 Sockeye Fry Caught

A marked sockeye fry at Mid-Scully Creek



The mark-recapture study will give us an estimate on the total population of fry emerging from the placed gravels.



LWSS technicians and volunteers checking the trap

Fauna Feature

American Beaver (*Castor canadensis*)



Beavers are the largest rodent in North America and they are located right here in the Lakelse watershed! They modify their habitat by cutting down trees to create beaver dams. Their homes (called lodges) have underwater entrances which keep predators out and regulate temperatures. Beaver dams flood outlying areas, creating wetlands which many creatures depend on to live.



FUN FACTS

- Beavers can stay underwater for up to 15 minutes
- They have a set of transparent eyelids that work like goggles to help them see under water
- Beavers used their webbed feet to propel them while swimming
- Their teeth are reinforced with iron which gives them an orange colour

(Weiler Woods for Wildlife)



Clothing and Card Sales



Hoodies – \$45

T-Shirts – \$25

Hats – \$25

**Greeting
Cards – \$5**



**UNISEX SIZES S-2XL
AVAILABLE**

**Funds raised support your local watershed
projects and programs**

If interested, email:
watershedcoordinator.lakelse@gmail.com

Interested in Volunteering?



LWSS has lots of volunteer opportunities to get involved in your local watershed happenings. If you are interested, feel free to email us at watershedcoordinator.lakelse@gmail.com – we really appreciate your help!

Our regular volunteer schedule during the summer includes:

- The Watershed Circuit on Wednesdays
 - Water quality monitoring at 15 tributaries of Lakelse Lake
- Lake Sampling on Thursdays or Fridays (weather dependent)
 - Water quality monitoring at 5 sites on Lakelse Lake by boat

Other opportunities including sign installations, fish counts, and helping with farmers market booths and interpretive events are also available!

Send us an email to make sure you are on our volunteer mailing list and you'll receive updates on all the opportunities

Keep in Touch!



- **Visit our website:**



<https://www.lakelsewatershedsociety.com/>

- **Follow us on social media:**



Instagram: @Lakelse Watershed Stewards Society



Facebook: @lakelse_watershed_society

- **Reach us by email at:**



watershedcoordinator.lakelse@gmail.com