

The GUMBOOT GAZETTE



[Jackpine Wetland
Interpretive Trail](#)

[Mid-Scully Fry
Monitoring](#)

[Hatchery Creek
Cutthroat Cam](#)

[Avian
Flu](#)



[Skeena Valley
Farmers Market](#)

[The Biggest Year
Birding Contest!](#)

[Fauna Feature:](#)



(OSU, 2011)

[Western Toad](#)

[New
LWSS
Clothing](#)

[Water
Quality
Monitoring
Program](#)

[Scratching Tree Videos](#)

Jackpine Wetland Interpretive Trail



Phase 1 is complete!

Have you been out yet to see the picnic table, interpretive sign, and BEAUTIFUL view at the lookout?

- 4 more interpretive signs were designed in partnership with Coast Mountain College students, and their stands were recently built by the Caledonia Secondary School metalworking class. These new signs and stands will be installed along the trail soon! **Hint* we're looking for volunteers interested in helping with sign installations 😊*
- Phase 2 planning is underway and LWSS will be continuing to build the trail this summer
- Keep an eye out on our [website](#) and social media pages for updates!



Thank you to all of our project partners!

Scully Creek Fry Out Project

The Sockeye Fry Out Migration monitoring on Mid-Scully Creek has begun!

This program evaluates the success of the spawning gravels previously placed in the stream to boost sockeye populations in the Lakelse Watershed. The mark-recapture portion of this study helps determine the efficiency of the trap and an estimate on the total population of sockeye fry emerging from the gravels placed in 2023.



**Keep an eye out for volunteer opportunities!
This program will be running until early June**



If you are not already on our volunteer mailing list, send us an email at: watershedcoordinator.lakelse@gmail.com

Cutthroat Cam!

Beginning in April, the LWSS underwater camera will be installed in Hatchery Creek with a motion sensor to monitor coastal cutthroat trout

The goal of the project is to assess current habitat use by cutthroat for spawning and identify restoration opportunities

This is another project with **volunteer opportunities!**

- Volunteers are needed to help clear debris from the camera fence
- Volunteers can also help us watch footage and count cutthroat and other fish swimming by the camera



The cutthroat data will be used to develop a restoration plan to enhance spawning habitat on hatchery creek

Water Quality Monitoring Program

From April to September, 15 tributaries and 5 locations on Lakelse Lake will be tested using a YSI ProDSS water quality meter.

Temperature, dissolved oxygen, pH, turbidity, conductivity and pressure will be recorded to determine the overall health of the lake.

- The Watershed Circuit and Lake Sampling will be **starting soon!** We need volunteers to help with this weekly monitoring from April until September
- If you are **interested in volunteering**, please send us an email: watershedcoordinator.lakelse@gmail.com



Avian Influenza (Bird Flu)

What is Avian Influenza? It's a virus that is highly contagious between birds while also possible to spread to other animals and humans

- A green-winged teal, trumpeter swan and several gulls were found deceased on Lakelse Lake
- They were sent for testing and have come back positive for avian influenza
- Only certain strains are classified as Highly Pathogenic Avian Influenza (HPAI), additional testing is required to determine if these birds are positive for HPAI

What to do if you are near a sick or dead animal

- **Do not touch** sick or dead animals or their droppings.
- **Do not bring** sick wild animals into your home.
- **Keep your pets away** from sick or dead animals and their feces (poo). Prevent them from touching or eating them by keeping them on a leash.
- **Report dead or sick birds or animals** as follows:



Type of bird or animal	Who to contact
Domestic birds (e.g. pets, poultry)	<u>Canadian Food Inspection Agency</u>
Wild birds (e.g. seabirds, geese, ducks, eagles)	BC Wild Bird Mortality Line: 1-866-431-2473
Wild mammals (e.g. foxes, racoon, skunks, minks)	During regular business hours: <u>BC Wildlife Health Program (250-751-7246)</u> After hours: your <u>nearest wildlife rehabilitator</u>
Marine mammals (e.g. seal, dolphin, porpoise)	<u>BC Marine Mammal Response Network</u> 1-800-465-4336

Avian Influenza (Bird Flu)

If the virus spreads among people it can evolve and spread more easily, making more people sick

By protecting yourself, you're also protecting others

If you touched or handled a sick or dead wild animal

Watch for symptoms for 10 days after exposure to sick or dead animals.

Symptoms include:



BCCDC

If you feel sick after being exposed to avian influenza

If you get symptoms within 10 days after exposure to sick or dead animals:

- **Tell your health care provider** that you have been in contact with animals and are concerned about avian influenza. This will help them give you appropriate advice on testing and treatment.
- **Stay home and away from others** while you have symptoms until 24 hours after your symptoms are gone. If you have to be near others, **wear a mask and wash your hands often.**

Resources

[BC Government](#)

[BC Centre for Disease Control](#)

[Government of Canada](#)

[H5N1 Detections in BC](#)



We're excited to announce we will be hosting a booth with SkeenaWild at the Skeena Valley Farmers Market this summer!

Sign up as a member or volunteer

Learn about our ongoing projects and programs

Support your local watershed initiatives through our clothing and greeting card sales



We'll be at the market once a month from May to August

Be sure to keep an eye on our social media pages and website for exact dates!



The Biggest Year Birding Contest

IM-PECK-ABLE Prizes

1. **\$500 cash** – winner is by draw from all submissions
2. A nice pair of **binoculars** – winner is by the greatest number of species observed
3. **LWSS clothing** prizes – top 3 photos submitted

Check out the inspiration behind this contest [here](#)

And special thanks to Jennifer Harvey for the personalized contest illustration below!!



Each bird sighting must include:

- Date and time observed
- GPS coordinates of a bird's sighting
- Bird species ID
- Photo of the bird is recommended but not mandatory. If not submitting a bird photo, submit a photo of the person birdwatching

The Biggest Year Birding Contest

Rules

- Contest runs from January 15th, 2024 to December 1st, 2024
- Must be a 2024 LWSS member (by May 31st, 2024) to enter – memberships are \$10 each and cover the household
- One submission per membership – minimum 10 species sightings, but the goal is to see the most species
- To become a member, fill out a [membership form](#) on our website, or email us at: watershedcoordinator.lakelse@gmail.com

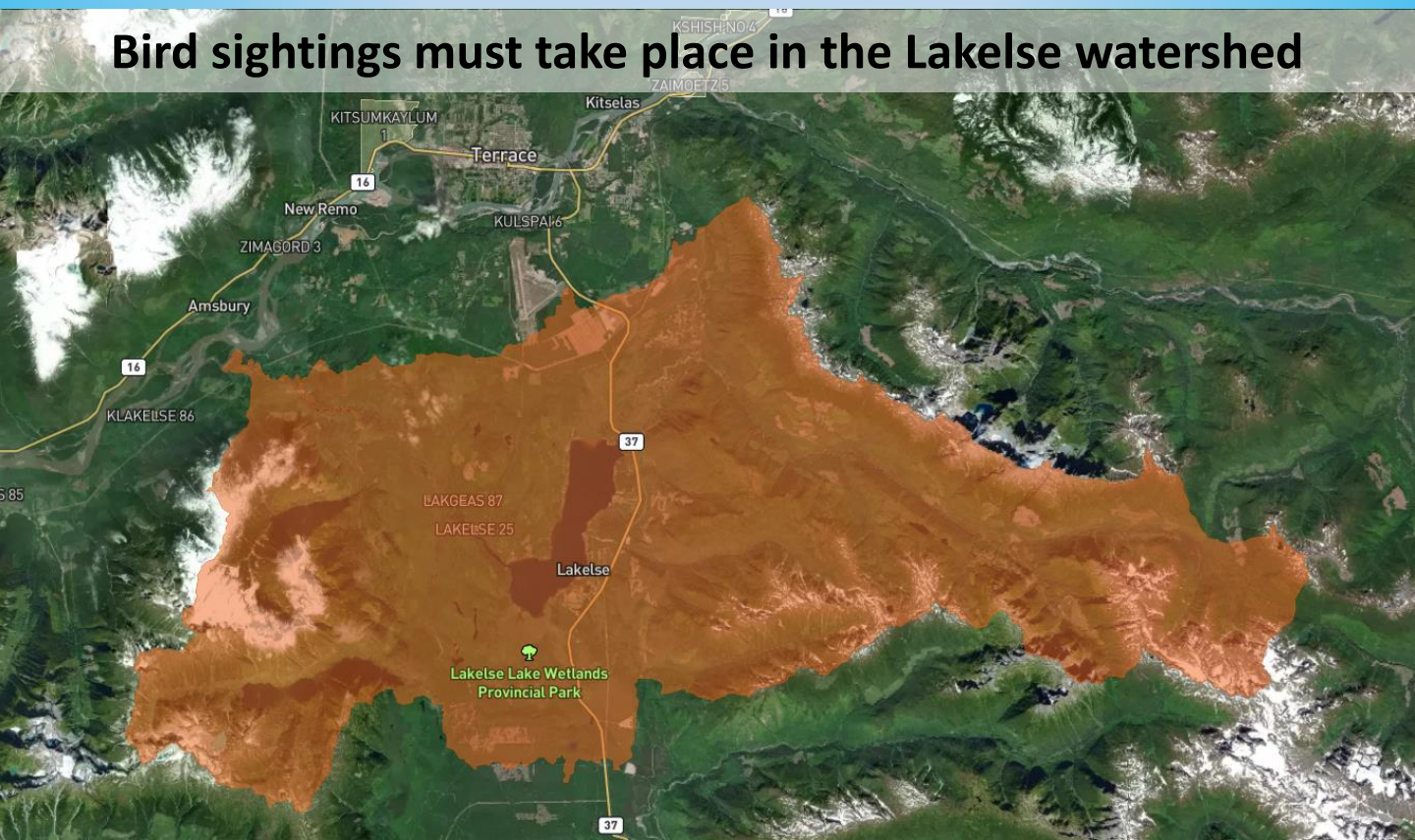
Submissions are through [iNaturalist](#)

Scan the QR code 



- Create an account and join [The Biggest Year](#) project
- For each bird observation in the Lakelse Watershed ensure you submit it on the app or website and add it to The Biggest Year project
- For help getting started click [here!](#)

Bird sightings must take place in the Lakelse watershed



Fauna Feature

WESTERN TOAD (*Anaxyrus boreas*)

The western toad is an amphibian that is well established in the Lakelse Lake watershed.

Between April and June, male and female western toads leave upland summer ranges and travel to shallow aquatic habitats to breed and lay eggs. Eggs hatch rapidly, and tadpoles swarm in groups of thousands in the shallowest and warmest waters to feed on algae. After 6 to 8 weeks, tadpoles metamorphose into toadlets and crawl onto land by the end of the summer. Western toads reach sexual maturity around 4 to 5 years old and live for more than 10 years.

Western toads are particularly impacted by roads and danger from vehicle traffic

Toadlets (young toads) migrating in dense groups have no chance of escaping cars passing by

Be mindful of toads when driving!

Check out this [great video](#) about western toad tadpoles!

Adults:

5.5 - 14.5 cm

Stocky body

Short legs

Dry and bumpy skin



Clothing and Greeting Cards



POP QUIZ: What's one of the best things about spring?

ANSWER: Hoodie and T-shirt weather!

And to continue the excitement... we have new merch!

These new hoodies and t-shirts feature a great blue heron, beautifully drawn by Jennifer Harvey



Heron
T-Shirts
\$30

Heron
Hoodies
\$50



Visit our website for more information and other products
or send us an email: watershedcoordinator.lakelse@gmail.com

Clothing and Greeting Cards



Other LWSS clothing and greeting cards are also still available!

Hoodies – \$45

T-Shirts – \$25

Hats – \$25



Greeting Cards – \$5



UNISEX SIZES S - 2XL
AVAILABLE

Funds raised support your local watershed projects and programs

SCRATCHING TREE VIDEOS!

The scratching tree seems to be a family favourite!



Check out these videos from November 2023:

- [Family Scratch](#)
- [Cubs Practicing](#)
- [Is This Right Mom?](#)



Thank you to Paul Rusch for capturing this footage!

Stay in Touch!



- **Visit our website:**



www.lakelsewatershedsociety.com/

- **Follow us on social media:**



Facebook : @Lakelse Watershed Stewards Society



Instagram : @lakelse_watershed_society_

- **Reach us by email at:**



watershedcoordinator.lakelse@gmail.com

We're always looking for neat photos of the Lakelse Watershed to feature on our pages, send them along!